



Luminate Control Tower

Visibility, Insights and Action

Business context

To stay ahead of today's supply chain complexities, you need to manage what you don't see, plan for what you don't know, prioritize unlimited options, and execute to align for success. In today's digital economy, visibility equals agility. What's required is an intentional design that provides an end-to-end view of supply chain operations and provide real-time information that helps everyone to understand impacts and then provides prescriptive steps to mitigate risks and reduce disruptions.

Solution description

Luminate Control Tower is a next-gen SaaS solution powering end to end visibility of your supply chain for faster, more accurate, and more informed decision-making. It gives you insights to see, understand, act and learn on real-time information from the entire digital ecosystem, including third-party data sources. Machine learning empowers prescriptive resolutions to supply chain challenges, taking prioritization and impact analysis into account.

Real results

Reduced inventory
write-offs by

20%

Reduced expediting
costs by

30%

Improved planner /
automation efficiency by

50%

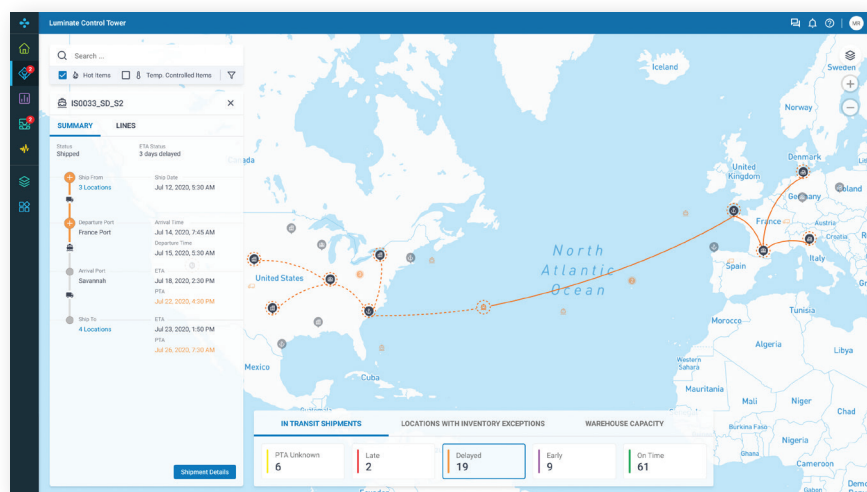
Key features

See

- **End-to-End Visibility:** Visualize the entire flow of goods upstream and downstream with one version of the truth.

Understand

- **Supply Chain Intelligence:** Augment visibility with diverse data sources, including partner data to offer more accurate intelligence.



Dashboards and real-time alerts identify delays and resulting impacts

Capability offerings

Visibility and Orchestration:

Luminate Control Tower is solution-agnostic, providing end-to-end visibility across functions and trading partners, enabling collaboration, ML-empowered resolution capabilities and the ability to execute actions across the enterprise.

- Monitoring & Alerting
- Predictive Visibility
- Internal & External Collaboration
- Resolve & Execute

Modern, Scalable Architecture:

Luminate Control Tower is built cloud-native / SaaS-native with robust APIs and an intuitive and engaging user experience, including mobile. It is designed to scale to the needs of the world's largest companies.

- Cloud native
- SaaS
- Open APIs
- Event Driven
- Microservices base

Cognitive Insights with AI/ML:

Luminate Control Tower is empowered with machine learning to ensure supply chain decisions are supported by rich data sources.

- Anomaly Detection
- Clustering Disruptions
- Prediction
- Insights vs KPIs

Act

- **Machine Learning:** Leverage machine learning to surface recommended actions, weighing impacts and prioritization with what-if scenarios.
- **Collaboration:** Share and discuss issues and insights with trading partners to quickly and effectively resolve situations.

Learn

- **Self-Learning:** Gain increasing insight as your supply chain evolves to improve future recommendations.

Key benefits

- Empower and engage planners to be more productive and effective decision makers.
- Improve customer experience with higher and more consistent on-time delivery.
- Reduce costs from expediting shipments due to disruption by an estimated 30%.
- Improve resource utilization through prioritization of issues and actions.
- Reduce inventory write-offs for excess, obsolete or damaged goods by an estimated 20%.

Digital transformation is at your fingertips

To learn more, visit blueyonder.com/platform/control-tower



www.tryonsolutions.com

blueyonder.com

Copyright © 2020, Blue Yonder Group, Inc. All rights reserved. Blue Yonder is a Registered Trademark of Blue Yonder Group, Inc. All other company and product names may be Trademarks, Registered Trademarks or Service Marks of the companies with which they are associated. Blue Yonder reserves the right at any time and without notice to change these materials or any of the functions, features or specifications of any of the software described herein. Blue Yonder shall have no warranty obligation with respect to these materials or the software described herein, except as approved in Blue Yonder's Software License Agreement with an authorized licensee. 05.19.2020

